

FRESHNESS YOU CAN SEE,  
PACKAGING YOU CAN

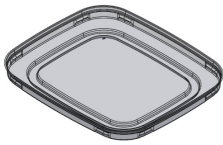
**TRUST**<sup>®</sup>

## Grab & Go Snack Packaging Solutions

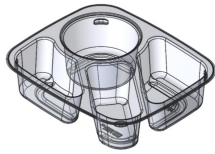
A wide variety of packaging options that delivers both  
the convenience & variety that consumer's crave.



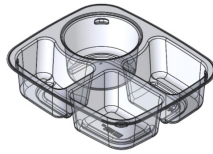




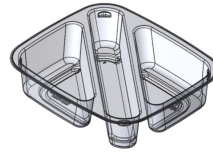
PET Over Snap Lid



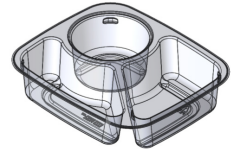
PET Top-Seal Tray 1



PET Top-Seal Tray 2

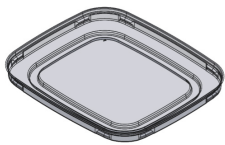


PET Top-Seal Tray 3

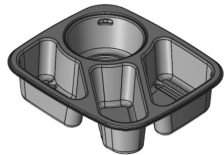


PET Top-Seal Tray 4

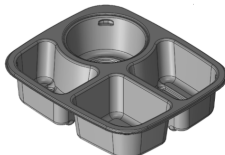
Part Number	Description	Dimensions (in)	Pc/Case	Case Weight/ Case Cube	Ti/Hi	Pc/Pallet	Case Dimensions (in)
N/A	PET Over Snap Lid	7.16 x 6.16 x 0.618					
37644	PET Top-Seal Tray 1	6.92 x 5.92 x 1.72	200	12.08 / 2.97	6/7	8,400	19.82 x 15.82 x 16.39
N/A	PET Top-Seal Tray 2	6.92 x 5.92 x 1.72					
N/A	PET Top-Seal Tray 3	6.92 x 5.92 x 1.72					
N/A	PET Top-Seal Tray 4	6.92 x 5.92 x 1.72					



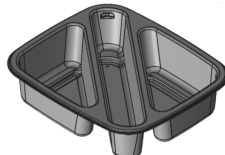
PP Over Snap Lid



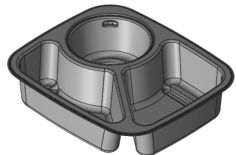
PP Top-Seal Tray 1



PP Top-Seal Tray 2

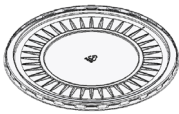


PP Top-Seal Tray 3

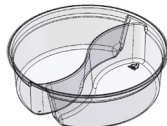


PP Top-Seal Tray 4

Part Number	Description	Dimensions (in)	Pc/Case	Case Weight/ Case Cube	Ti/Hi	Pc/Pallet	Case Dimensions (in)
N/A	PolyPro Over Snap Lid	7.16 x 6.16 x 0.618					
37645	PolyPro Top-Seal Tray 1	6.92 x 5.92 x 1.72	140	12.08 / 2.97	6/7	5,880	19.82 x 15.82 x 16.39
N/A	PolyPro Top-Seal Tray 2	6.92 x 5.92 x 1.72					
N/A	PolyPro Top-Seal Tray 3	6.92 x 5.92 x 1.72					
N/A	PolyPro Top-Seal Tray 4	6.92 x 5.92 x 1.72					



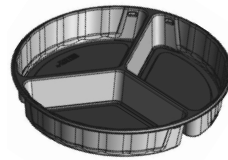
Dual Cavity Lid



Dual Cavity Base



Tri-Cavity Lid



Tri-Cavity Base



Wrap Clam

Part Number	Description	Dimensions (in)	Pc/Case	Case Weight/ Case Cube	Ti/Hi	Pc/Pallet	Case Dimensions (in)
37512	Dual Cavity Lid	6.953 (dia.) x 0.235	500	17.53 / 3.16	5/5	12,500	22.31 x 16.31 x 16.13
37511	Dual Cavity Base	6.825 (dia.) x 1.95	250	25.5 / 3.16	5/5	6,250	22.31 x 16.31 x 16.13
36609	Tri-Cavity Lid	11.45 (dia.) x 0.811	120	12.38 / 4.39	4/5	2,400	23.63 x 19.31 x 16.63
36608	Tri-Cavity Base	11.22 (dia.) x 1.905	60	12.83 / 3.15	5/6	1,800	23.94 x 15.81 x 14.38
34539	Wrap Clamshell	7.66 x 3.52 x 2.15	440	23.4 / 3.17	5/5	11,000	22.31 x 16.31 x 16.13

You've perfected your product.  
**We've perfected how to showcase it.**

Choose Display Pack's Multi-Compartment Grab & Go Packaging For:

### ANSWERING CONSUMER DEMAND

Cater to customer tastes with on-the-go snacking options.

The latest generation of consumers seek out a custom meal experience that is uniquely tailored to their tastes. Capitalize on the \$33 billion grab & go food industry by providing consumers with convenient multi-compartment meal choices that deliver the variety they seek.<sup>1</sup> We provide options tailored to both single-serve & multi-serve applications via our multi-compartment snack packs and our dual & tri-cavity trays.



### SUSTAINABILITY & EFFICIENCY

Let's make life a little easier for you.

Our line is optimized for in-store efficiency by featuring a standardized packaging footprint that increases your marketability & merchandising flexibility throughout the store floor. PLUS, our grab & go packaging is available in PET and features a #1 recycle code for streamlined recycling.

### QUALITY & DURABILITY

We know a thing or two about quality.

Our leak-resistant containers are constructed for durability with superior stack-ability features that maximize your shelf space + sales per square foot. We produce all of our packaging with a high grade FDA approved material AND we're Safe Quality Food Level II certified.



We specialize in crafting solutions to fit your needs. Build your brand while still capitalizing on the time & cost efficiencies of stock tooling by selecting custom colored film or branded inserts that feature your logo, messaging, & more.  
**Let's talk.**

<sup>1</sup>"Millennials sparking customization movement." Food Business News. April 30, 2018.

## Introducing top-seal multi-compartment packaging. The ultimate in consumer convenience.



**HOT OR COLD, WE HAVE A SOLUTION FOR YOU:** Our top-seal compatible multi-compartment trays are available in both PET & microwavable PP trays for a cohesive, family appearance for in-store deli, bakery + produce offerings while still providing flexibility in reheat-ability, refrigeration, & more.

**EXTEND FOOD FRESHNESS:** Our trays feature a wide flange for easy sealing to extend product shelf-life. Plus, consumers have the flexibility to snack & stow remaining food with our snap-over lid options - preventing unnecessary food waste.

**FLEXIBLE CONFIGURATIONS:** Need a cavity for dipping or one for cutlery? We've got you covered. With four unique packaging configurations for both PET & PP trays, you can select the package that works best for your application. Plus, all of our multi-compartment trays maintain a uniform footprint to ensure stack-ability across the board.



## Your answer for safe & secure snacking solutions: Display Pack's sleek, tamper evident multi-compartment trays.

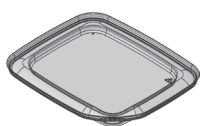


**SLEEK DESIGN = INCREASED PRODUCT VISIBILITY:** We help you stand out with a unique tamper evident design that features one convenient lock + tamper evident indicator that notifies the shopper the container has been opened. Our multi-compartment packaging is designed to increase your sales with sleek lines, crystal clear clarity, & maximum eye appeal.

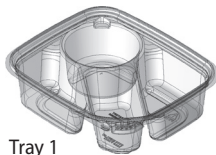
**SAFE, SECURE, & ENVIRONMENTALLY-RESPONSIBLE:** By forming our lid & base separately, we save on material costs traditionally associated with tamper evident clamshells AND reduce waste from the traditional tamper evident tearaway strip. Plus, Display Pack's self-containing packaging = peace of mind by eliminating loose plastic safety hazards for consumers.

**FLEXIBLE CONFIGURATIONS:** Need a cavity for dipping or one for cutlery? We've got you covered. With four unique packaging configurations, you can select the package that works best for your application. Plus, all of our multi-compartment tamper evident containers maintain a uniform footprint to ensure stack-ability across the board.

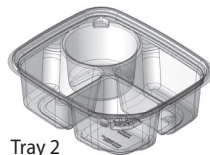
### Multi-Compartment Grab & Go Packaging



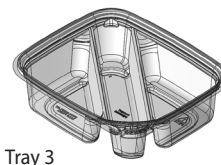
Snack Tray Lid



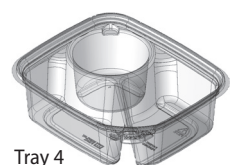
Tray 1



Tray 2



Tray 3



Tray 4

Part Number	Description	Dimensions (in)	Pc/Case	Case Weight/ Case Cube	Ti/Hi	Pc/Pallet	Case Dimensions (in)
36462	Snack Tray Lid	6.46 x 5.46 x 0.25	420	12.5 / 2.97	6/5	12,600	19.82 x 15.82 x 16.39
36701	Snack Tray 1	7.075 x 6.075 x 2.121	210	12.08 / 2.97	6/5	6,300	19.82 x 15.82 x 16.39
N/A	Snack Tray 2	7.075 x 6.075 x 2.121					
N/A	Snack Tray 3	7.075 x 6.075 x 2.121					
N/A	Snack Tray 4	7.075 x 6.075 x 2.121					



[www.displaypack.com](http://www.displaypack.com)



650 West St. | Cedar Springs, MI 49319 | 616-451-3061